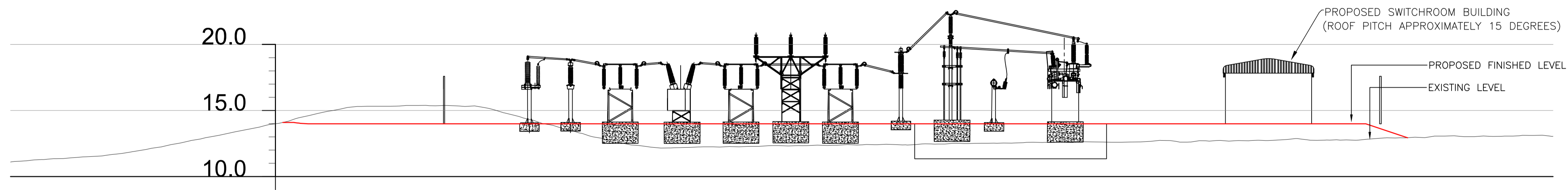


## PROPOSED SECTION A-A

SCALE:— 1:200



## PROPOSED SECTION B-B

SCALE:— 1:200

KEY PLAN

NOTES

1. THIS DRAWING IS FOR INFORMATION ONLY AND IS BASED ON INFORMATION RECEIVED FROM THIRD PARTIES. IN THE EVENT THAT THE INFORMATION IS RELIED UPON AND IS SUBSEQUENTLY FOUND TO BE INCORRECT, HYDROCK CONSULTANTS LTD ACCEPTS NO RESPONSIBILITY FOR ANY DIRECT AND/OR CONSEQUENTIAL LOSS THAT MAY OCCUR AS A RESULT.
2. THIS DRAWING SHOULD NOT BE SCALED FROM AND SHOULD NOT, IN ANY CIRCUMSTANCE, BE RELIED UPON WHEN UNDERTAKING EXCAVATIONS, INCLUDING TRIAL HOLES, EITHER WITHIN THE SITE BOUNDARY OR TO ITS SURROUND. AS NOTED ABOVE, THE INFORMATION SHOWN IS RECEIVED FROM THIRD PARTIES AND CANNOT BE GUARANTEED BY HYDROCK CONSULTANTS LTD.
3. SECTIONS ARE BASED ON SUBSTATION ELEVATIONS PROVIDED BY NATIONAL GRID ELECTRICITY DISTRIBUTION (NGED) AND MAY BE LIABLE TO CHANGE.
5. ALL DIMENSIONS SHOWN ARE IN METRES (m).

REVISIONS

PRELIMINARY ISSUE					
REV	REVISION NOTES/COMMENTS	DATE	CHECKED BY	DATE	APPROVED BY
P01		31/07/23	JC	31/07/23	GC

**Hydrock**  
 Merchants House  
 Wapping Road  
 Bristol  
 BS1 4RW  
 t: +44 (0) 117 945 9225  
 e: bristol@hydrock.com

CLIENT  
 WELSH GOVERNMENT

PROJECT  
 CELTIC LAKES, NEWPORT

TITLE  
 NGED 132kV/33kV/11kV  
 SUBSTATION INDICATIVE SECTIONS

HYDROCK PROJECT NO.  
 C-15602

SCALE @ A0  
 1:200

STATUS DESCRIPTION  
 FOR INFORMATION ONLY

STATUS  
 S2

DRAWING NO. (PROJECT CODE-ORIGINATOR-ZONE-LEVEL-TYPE-ROLE-NUMBER)  
 15602-HYD-XX-XX-DR-Y-3005

REVISION  
 P01