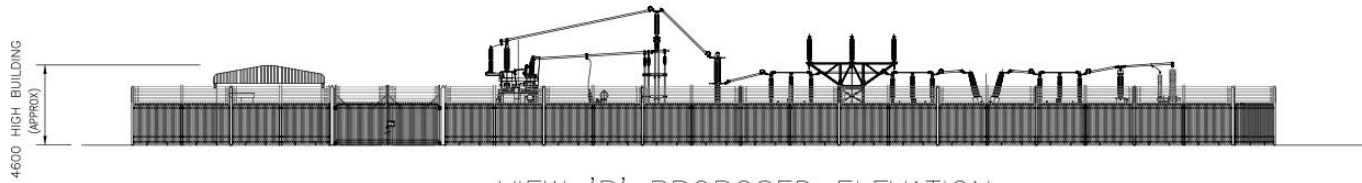


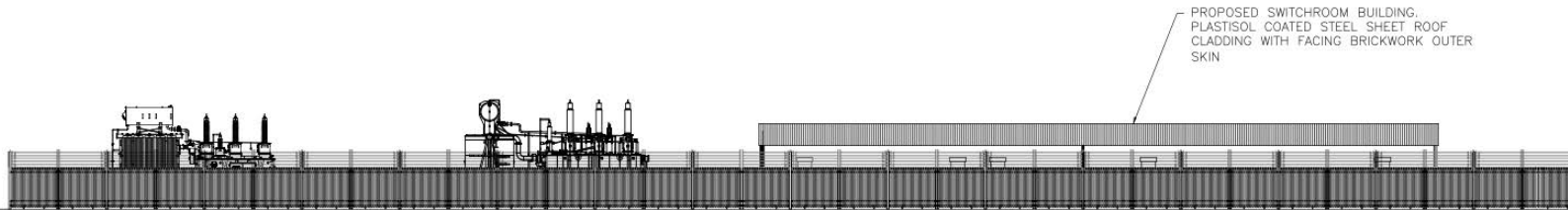
VIEW 'A' PROPOSED ELEVATION

SCALE:- 1:150



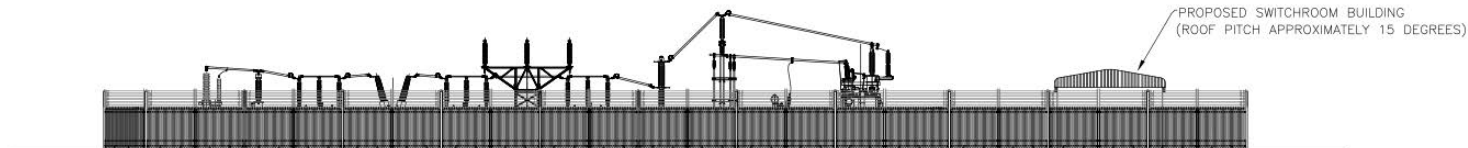
VIEW 'B' PROPOSED ELEVATION

SCALE:- 1:150



VIEW 'C' PROPOSED ELEVATION

SCALE:- 1:150



VIEW 'D' PROPOSED ELEVATION

SCALE:- 1:150

NOTES

1. THIS DRAWING IS FOR INFORMATION ONLY AND IS BASED ON INFORMATION RECEIVED FROM THIRD PARTIES. IN THE EVENT THAT THE INFORMATION IS RELIED UPON AND IS SUBSEQUENTLY FOUND TO BE INCORRECT, HYDROCK CONSULTANTS LTD ACCEPTS NO RESPONSIBILITY FOR ANY DIRECT AND/OR CONSEQUENTIAL LOSS THAT MAY OCCUR AS A RESULT.
2. THIS DRAWING SHOULD NOT BE SCALED FROM AND SHOULD NOT, IN ANY CIRCUMSTANCE, BE RELIED UPON WHEN UNDERTAKING EXCAVATIONS, INCLUDING TRIAL HOLES; EITHER WITHIN THE SITE BOUNDARY OR TO ITS SURROUND. AS NOTED ABOVE, THE INFORMATION SHOWN IS RECEIVED FROM THIRD PARTIES AND CANNOT BE GUARANTEED BY HYDROCK CONSULTANTS LTD.
3. SUBSTATION ELEVATIONS HAVE BEEN PROVIDED BY NATIONAL GRID ELECTRICITY DISTRIBUTION (NGED) AND MAY BE LIABLE TO CHANGE.
5. ALL DIMENSIONS SHOWN ARE IN METRES (M).

REVISIONS

ISSUED FOR FAC					
PO2	KS	01/06/23	GC	01/06/23	GC
INITIAL ISSUE					
PO2	KS	20/04/23	GC	20/04/23	GC
REVISION NOTES/COMMENTS					
REV	DRAWN BY	DATE	CHECKED BY	DATE	APPROVED BY



CLIENT
WELSH GOVERNMENT

PROJECT
CELTIC LAKES, NEWPORT

TITLE
NGED 132kV/33kV/11kV SUBSTATION PROPOSED ELEVATIONS

HYDROCK PROJECT NO. 15602	SCALE @ A1 1:150	STATUS S2
STATUS DESCRIPTION SUITABLE FOR INFORMATION		REVISION P02
DRAWING NO. / PROJECT CODE-ORIGINATOR ZONE LEVEL-TYPE-ROLE-NUMBER 15602-HYD-XX-XX-DR-Y-3004		